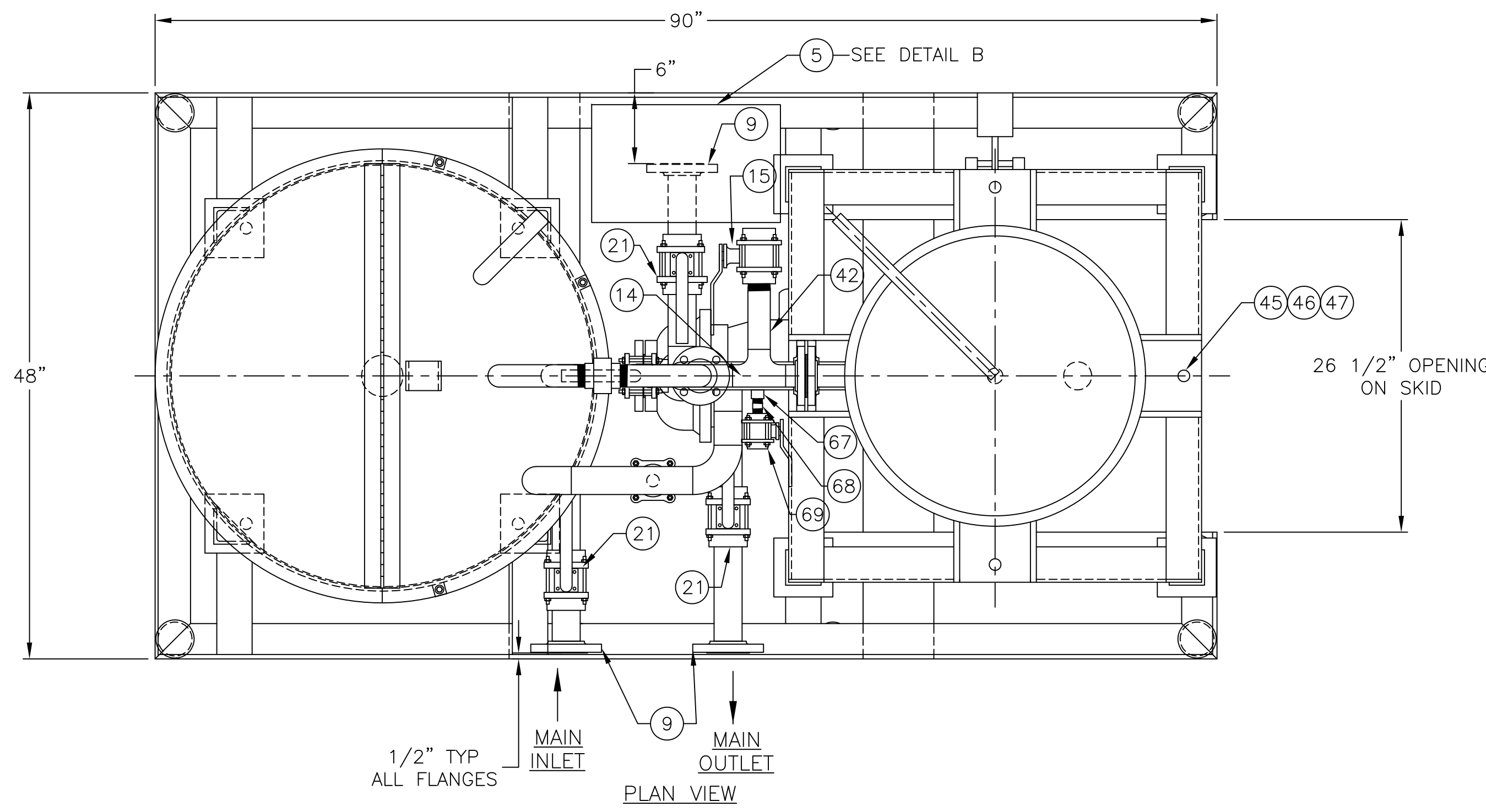
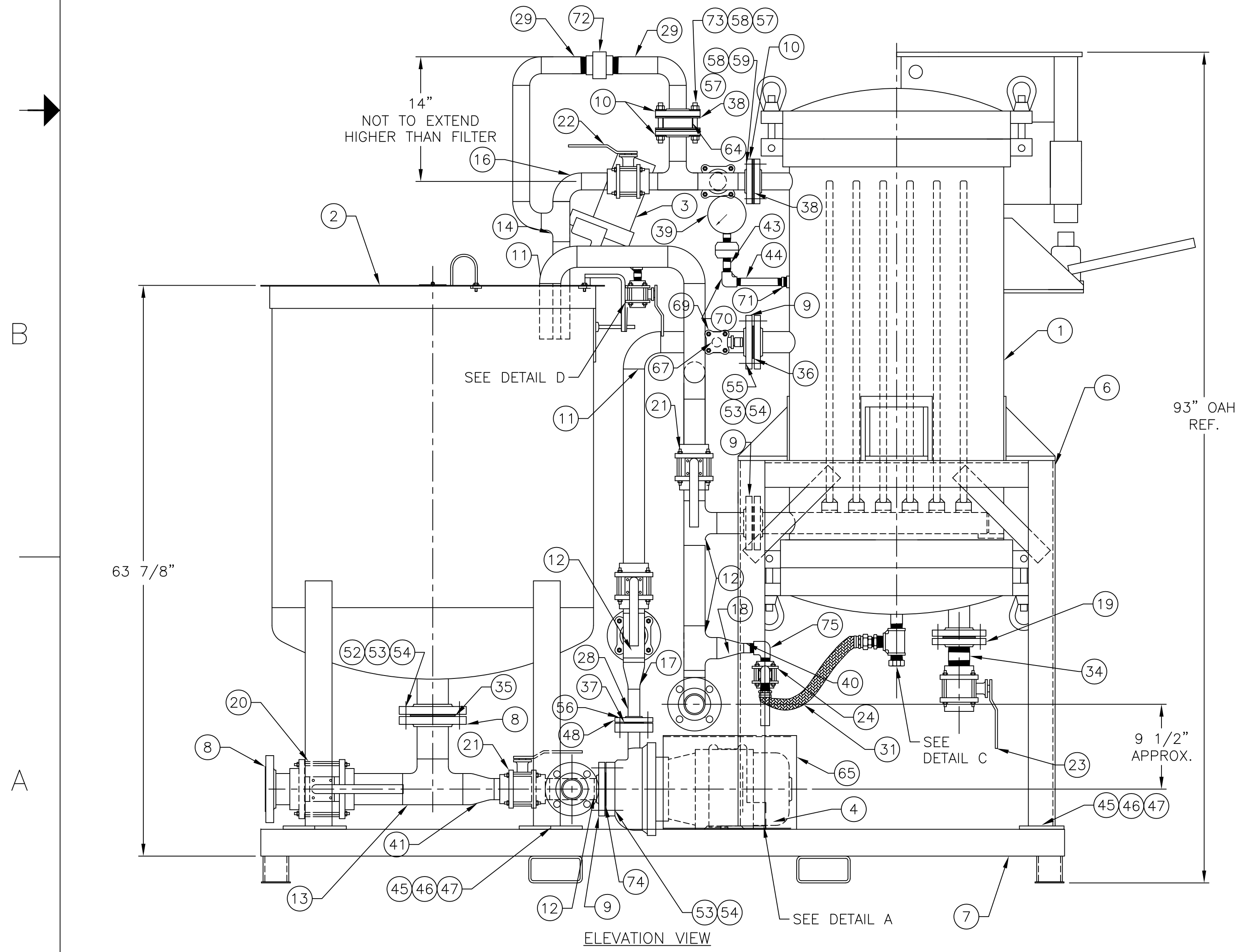
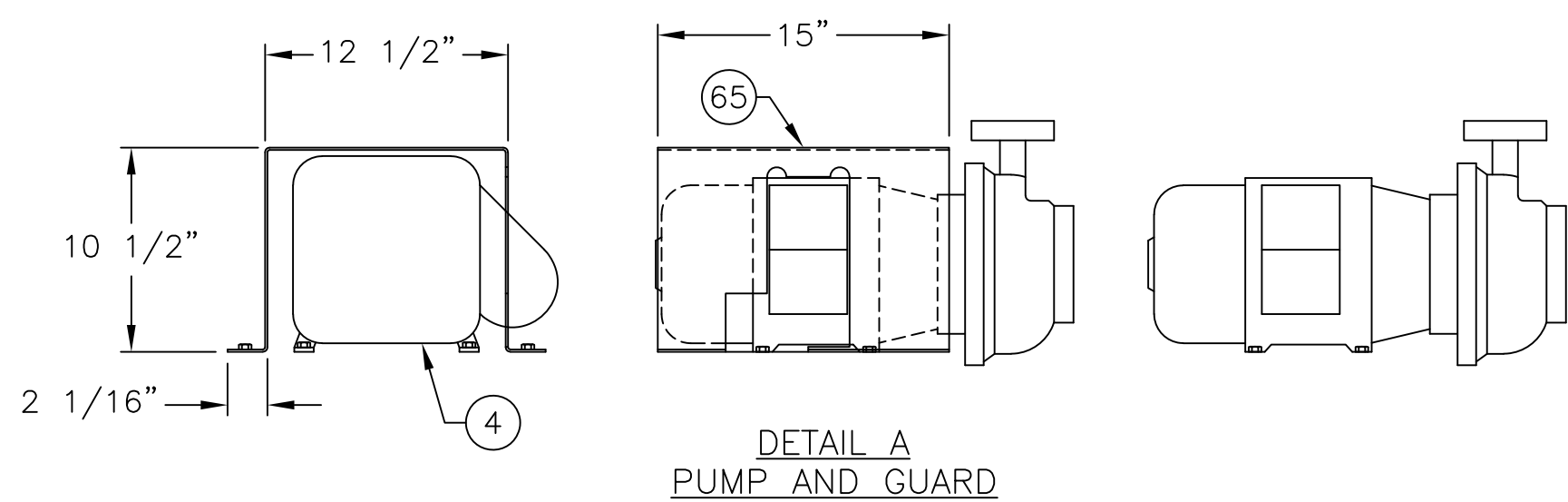
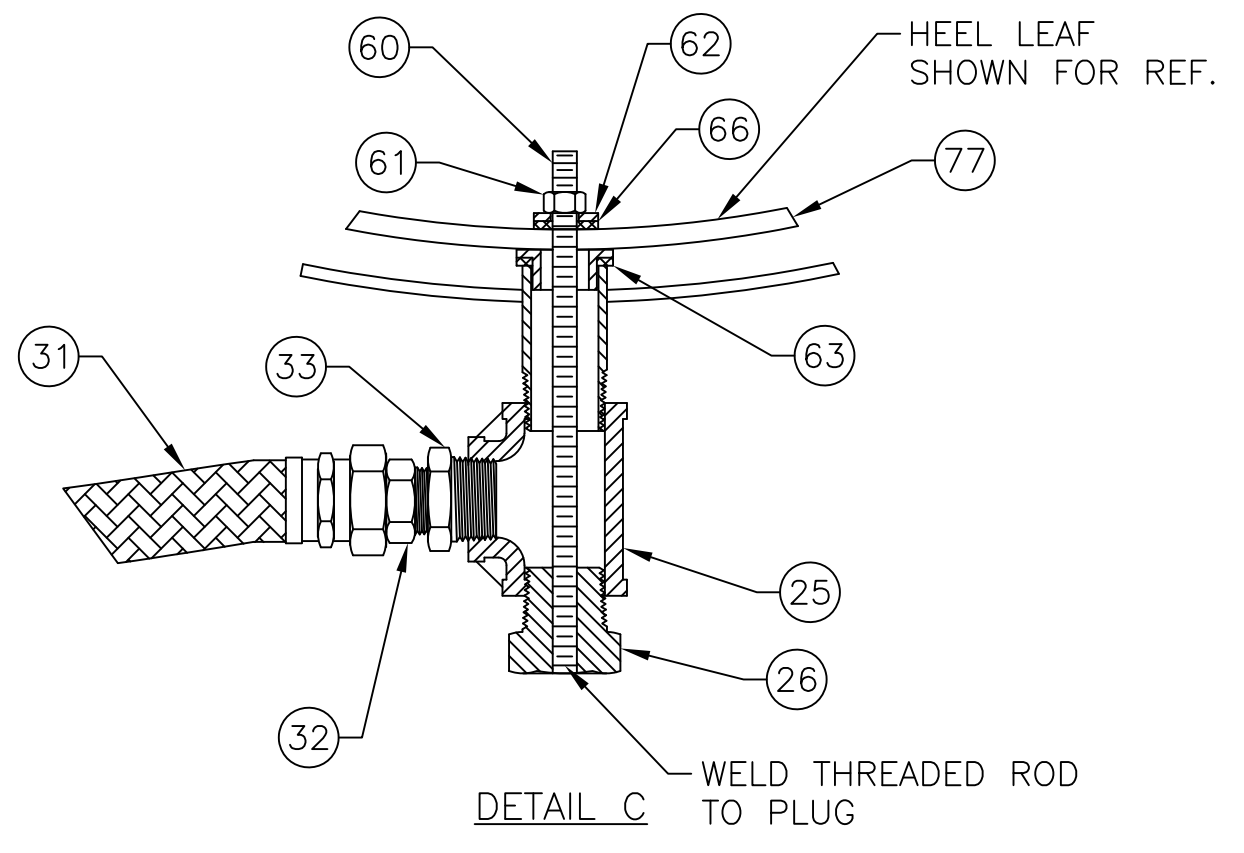
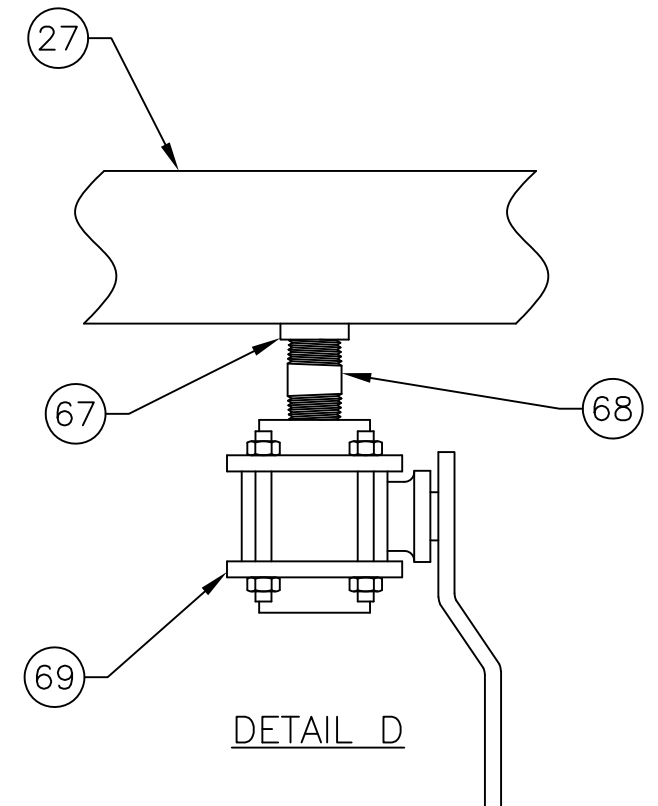
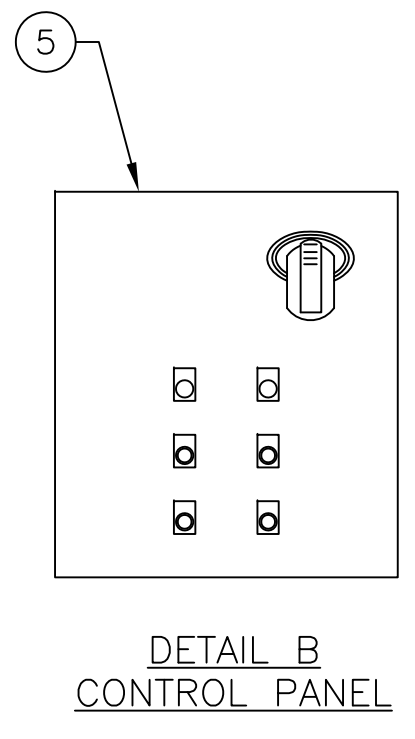


8 7 6 5 4 3 2 1



- NOTES:
 1. MATERIAL: 304 SS EXCEPT AS NOTED
 2. ALL FLANGE BOLT HOLES TO STRADDLE CENTERLINES
 3. FILTER AREA: 40 SQ FT



BILL OF MATERIALS			
ITEM	QTY	DESCRIPTION	NOTES
1	1	PRESSURE LEAF FILTER, LEEM MODEL 24MVS40, WITH HEEL LEAF DETAIL	
2	1	PRE-COAT TANK, 36" OD	
3	1	MIXER	
4	1	MOTOR & PUMP UNIT	
5	1	CONTROL PANEL	
6	1	FILTER SUPPORT STRUCTURE	
7	1	SKID	
8	2	3" 150# RAISED FACE SLIP ON FLANGE	
9	6	2" 150# RAISED FACE SLIP ON FLANGE	
10	3	1 1/2" 150# RAISED FACE SLIP ON FLANGE	
11	6	2" SCH 40 BUTTWELD 90° ELBOW, LONG RADIUS	
12	4	2" SCH 40 BUTTWELD TEE	
13	1	3" SCH 40 BUTTWELD TEE	
14	3	1 1/2" SCH 40 BUTTWELD TEE	
15	1	1 1/2" MANUAL BALL VALVE, THREADED	
16	4	1 1/2" SCH 40 BUTTWELD 90° ELBOW, LONG RADIUS	
17	1	2" x 1" SCH 40 BUTTWELD CONCENTRIC REDUCER	
18	1	2" x 3/4" SCH 40 BUTTWELD CONCENTRIC REDUCER	
19	1	2" 150# RAISED FACE THREADED FLANGE	
20	1	3" MANUAL BALL VALVE, SOCKET WELD	
21	6	2" MANUAL BALL VALVE, SOCKET WELD	
22	1	1 1/2" MANUAL BALL VALVE, SOCKET WELD	
23	1	2" MANUAL BALL VALVE, THREADED	
24	1	3/4" MANUAL BALL VALVE, THREADED	
25	1	1" 150# THREADED TEE	
26	1	1" 150# HEX PLUG	
27	11 FT.	2" SCH 40 PIPE	
28	4 IN.	1" SCH 40 PIPE	
29	5 FT.	1 1/2" SCH 40 PIPE	
30	2 FT.	3" SCH 40 PIPE	
31	1	BRAIDED HOSE	
32	1	FLARED STRAIGHT ADAPTER, 3"	
33	1	1" x 3/4" HEX REDUCING BUSHING	
34	1	2" SCH 40 PIPE NIPPLE, T.B.E., 3" LONG	
35	1	GASKET, 3" 150#, FULL FACE, 1/8" THK., MAT'L: VITON	
36	3	GASKET, 2" 150#, FULL FACE, 1/8" THK., MAT'L: VITON	
37	1	GASKET, 1" 150#, FULL FACE, 1/8" THK., MAT'L: TEFLON	
38	3	GASKET, 1 1/2" 150#, FULL FACE, 1/8" THK., MAT'L: VITON	
39	1	PRESSURE GAUGE, 4" FACE, GLYCERINE FILLED, 1/2" NPT CONN., 30 Hg VAC TO 100 PSI WITH DIAPHRAGM SEAL	
40	1	3/4" SCH 40 PIPE NIPPLE, T.O.E., 1 1/2" LG.	
41	1	3" x 2" SCH 40 BUTTWELD CONCENTRIC REDUCER	
42	1	1 1/2" SCH 40 PIPE NIPPLE, T.O.E., 6" LG.	
43	1	1/2" SCH 40 PIPE NIPPLE, T.B.E., 2" LG.	
44	1	1/2" SCH 40 PIPE NIPPLE, T.B.E., 8" LG.	
45	12	7/8"-9 UNC x 2" LG. HEX BOLT, FULLY THREADED	
46	12	7/8"-9 UNC HEX NUT	
47	12	7/8" FLAT WASHER	
48	1	1" 150# RAISED FACE SLIP ON FLANGE	
49	4	1" 150# RAISED FACE SLIP ON FLANGE	
50	4	3/8"-16 UNC HEX NUT	
51	4	3/8" FLAT WASHER	
52	4	5/8"-11 UNC x 3" LG HEX BOLT, PARTIALLY THREADED	
53	20	5/8"-11 UNC HEX NUT	
54	20	5/8" FLAT WASHER	
55	16	5/8"-11 UNC x 2 1/2" LG HEX BOLT, PARTIALLY THREADED	
56	4	1/2"-13 UNC x 2" LG. HEX BOLT	
57	16	1/2"-13 UNC HEX NUT	
58	16	1/2" FLAT WASHER	
59	4	1/2"-13 UNC x 2 1/4" LG. HEX BOLT, PARTIALLY THREADED	
60	1	3/8"-16 UNC THREADED ROD, 8" LG.	
61	1	3/8"-16 UNC HEAVY HEX NUT	
62	1	FLAT WASHER, 1 1/2" OD x 7/16" ID x 1/8" THK.	
63	1	GASKET, 1 1/2" OD x 1" ID x 1/8" THK., MAT'L: VITON	
64	1	RUPTURE DISC FOR 1 1/2" PIPE, FLANGE MOUNT, 100 PSI BURST	
65	1	MOTOR & PUMP GUARD, 11 GA THK.	
66	1	GASKET, 1 1/2" OD x 3/8" ID x 1/8" THK., MAT'L: VITON	
67	2	1/2" 150# HALF COUPLING, SCREWED	
68	2	1/2" SCH 40 PIPE NIPPLE, T.B.E., 2" LG.	
69	2	1/2" MANUAL BALL VALVE, THREADED	
70	1	1/2" 150# THREADED ELBOW	
71	1	3/4" x 1/2" HEX REDUCING BUSHING, 150#	
72	1	1 1/2" 150# THREADED UNION	
73	4	1/2"-13 UNC x 4 1/2" LG. STUD	
74	1	GASKET, 2" 150#, FULL FACE, 1/8" THK., MAT'L: TEFLON	
75	1	3/4" 150# STREET ELBOW	
76	1	SET OF (6) FILTER LEAVES	
77	1	HEEL LEAF	
78	1	SET OF (2) SPACER BARS W/ MOUNTING HARDWARE	

CERTIFIED FOR PRODUCTION

THIS DRAWING CONTAINS INFORMATION PROPRIETARY TO LEEM FILTRATION. IT IS SUBMITTED IN CONFIDENCE AND IS TO BE USED SOLELY FOR THE PURPOSE FOR WHICH IT IS FURNISHED AND IS TO BE RETURNED UPON REQUEST. THIS DRAWING AND SUCH INFORMATION IS NOT TO BE REPRODUCED, TRANSMITTED, DISCLOSED, OR USED OTHERWISE IN WHOLE OR IN PART WITHOUT THE WRITTEN AUTHORIZATION OF LEEM FILTRATION.

TOLERANCES UNLESS OTHERWISE SPECIFIED

MACHINED DIMENSIONS:
 XX ±.020 FINISH: 125
 XXX ±.010 ANGLES: ±.2
 XXXX ±.005 RADII: ±.03

FRACTIONAL DIMENSIONS:
 1/X ±1/16

REMOVE ALL BURRS AND BREAK ALL SHARP EDGES: .016 x 45°

BY: _____ DATE: _____
 LEEM FILTRATION

LEEM FILTRATION 25 Arrow Road Ramsey, NJ 07446 www.leemfiltration.com

LEEM PORTABLE PRESSURE LEAF FILTER OUTLINE

SIZE: D DWG NO: D-6253-CUST REV R0
 CHK BY: DATE: 8/21/23

SCALE: NTS DATE: 8/21/23 Sheet: 1 OF 1

8 7 6 5 4 3 2 1